

Name: _____

Sec 3 Systemic and Pulmonary Circulation Worksheet

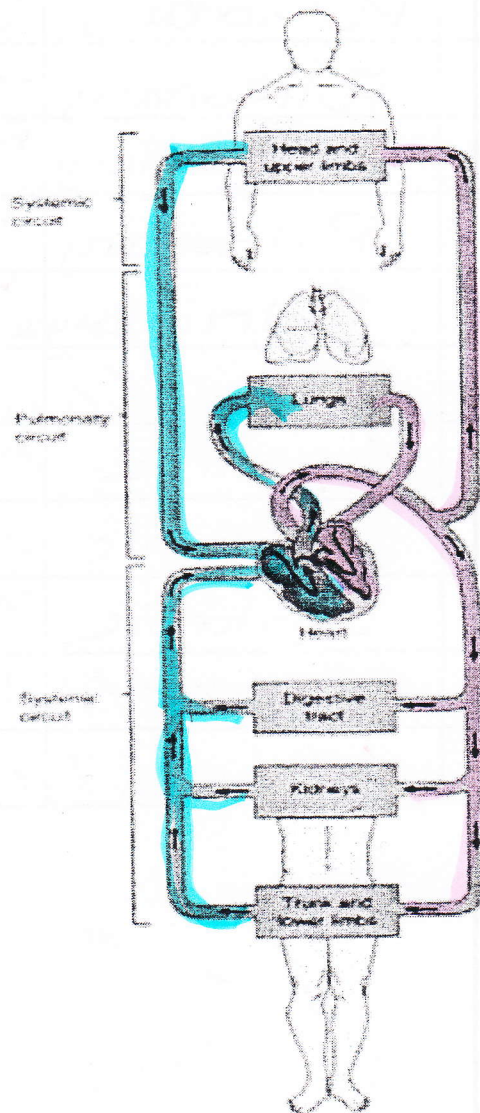
1. What is the difference between the Systemic and Pulmonary circulation?

Systemic circulation transports the oxygenated blood from the heart to the body.

Pulmonary Circulation transports the deoxygenated blood from the heart to the lungs.

2. In the diagram below, color the oxygenated blood RED, and the deoxygenated blood BLUE. Be sure to label the three types of blood vessels: artery, vein, and capillary. Also, label the four chambers of the heart!

from heart to lungs.



3. Fill in the table below:

Structure	Pulmonary or Systemic Circulation?	Function
Inferior Vena Cava	Systemic	brings blood from body to ♡
Superior Vena Cava	Systemic	"
Right Atrium	Systemic	Receives blood without O ₂ + sends it to r. ventricle.
Tricuspid Valve	Systemic	Value that connects r.a to r.v
Right Ventricle	Pulmonary	pushes blood to pulmonary arteries towards lungs
Pulmonary Valve	Pulmonary	valve that connects R. ventricle to pulmonary arteries
Pulmonary Arteries	Pulmonary	brings deoxygenated blood to lungs
Pulmonary Veins	Pulmonary	bring oxygenated blood to ♡
Left Atrium	Pulmonary	receives blood with O ₂ + sends it to L.V
Mitral Valve	Systemic	Connects l. atrium to l. ventricle
Left Ventricle	Systemic	sends blood to aorta.
Aortic Valve	Systemic	connects l. ventricle to aorta
Aorta	Systemic	largest artery sends blood to body
Septum	Systemic	muscle separates ventricles
Myocardium	Systemic	muscle of heart wall